

Airforce

High Efficiency Hand Dryer

Secamanos altamente eficiente • Sèche-mains à haute efficacité



All J & J4 Series

Todos los de la serie J4 y J4
Ensemble de la série J4 et J4



Please read and save these instructions. Read carefully before attempting to assemble, install, operate or service the product described. Protect yourself and others by observing all safety information. Failure to comply with instructions could result in personal injury and/or property damage. Retain instructions for future reference.

Por favor lea y guarde estas instrucciones. Léalas cuidadosamente antes de tratar de montar, instalar, operar o dar mantenimiento al producto aquí descrito. Protéjase usted mismo y a los demás observando toda la información de seguridad. No seguir las instrucciones puede ocasionar daños, tanto personales como materiales. Guarde estas instrucciones para referencia en el futuro.

Lire et conserver ces instructions. Les lire attentivement avant de commencer à assembler, à installer, à faire fonctionner ou à entretenir l'appareil décrit. Pour se protéger et protéger autrui, observer toutes les consignes de sécurité. Négliger de se conformer à ces instructions peut causer des blessures personnelles et/ou des dommages matériels. Conserver ces instructions pour références ultérieures.



World Dryer Corporation

5700 McDermott Drive
Berkeley, IL 60163 U.S.A.
800-323-0701
www.worlddryer.com

Description

World warm air hand dryer, powered by universal brush motor, delivers 1100 Watts of drying power. This hand dryer runs on 120 Volt or 208-240 Volt AC electrical supply depending on model. An infrared sensor is used to automatically turn the dryer on and off. This model is intended for use in commercial, industrial, office and public facility environments.


Electrical Specifications

Table 1


| Models | Type | Electrical Input | Rated Amperage | Rated Watts | Certifications |
|--------|-----------|----------------------|----------------|-------------|----------------|
| J-XXX | Automatic | 120 VAC, 50/60Hz | 9.6A | 1100 | UL, E320188 |
| J4-XXX | Automatic | 208-240 VAC, 50/60Hz | 4.8A | 1100 | UL, E320188 |

General Safety Information


This appliance is not intended for use by young children or persons with physical, sensory or mental disabilities unless adequately supervised by a responsible person to ensure they can use the appliance safely. Young children should be supervised to ensure they do not play with the appliance.

 **DANGER** Failure to disconnect the power source before installation or servicing can result in serious injury or death from electric shock.


- Always disconnect the power source before servicing or installing the hand dryer.

 **DANGER** Failure to properly ground this unit could result in severe electrical shock and/or death.

- This hand dryer must be properly grounded (Earthed) for safe operation. An identified ground connection point is supplied on the hand dryer's wall base.
- We recommend GFCI protection in wet or damp locations or as required by local code.

 **WARNING** Risk of fire, personal injury or property damage are possible if local codes, or safety recommendations are not followed.

- Use only the electrical power (voltage and frequency) specified for the model hand dryer being installed. See Table 1 – Electrical Specifications.
- Connect the hand dryer to the nearest suitable distribution panel. The fixed wiring must include a disconnection means complying with local wiring codes.
- To limit a voltage drop, and insure efficient operation, use No. 12 AWG (4 mm²) wire or larger as required by local electrical codes.
- Always connect to a branch circuit with circuit breaker or fuse protection with an electrical rating greater than the model hand dryer's rated amperage shown in Table 1 - Electrical Specifications.
- To avoid a hazard due to inadvertent resetting of the thermal cutout, the hand dryer must not be supplied through an external switching device, such as a timer, or connected to a circuit that is regularly switched on and off by the utility.
- Each automatic model hand dryer must have a dedicated circuit.
- Route all field wiring away from moving parts within the hand dryer.

 **CAUTION** Improper mounting could result in personal injury or property damage.

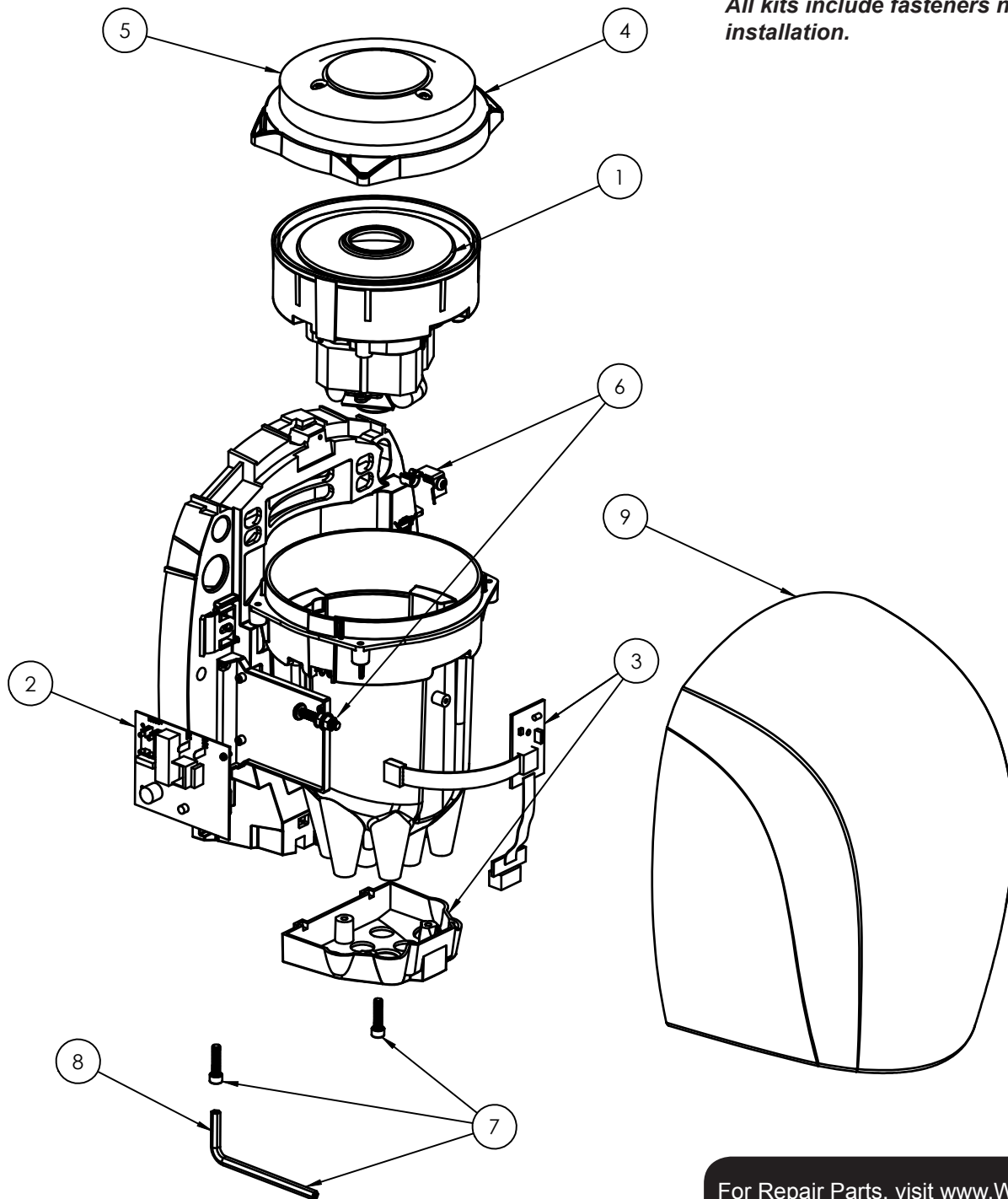
- Follow the mounting height recommendations in Table 2.
- On a stud wall, one side of the hand dryer should be mounted to an existing stud.

Unpacking

1. Remove fuse or shut off power to the dryer at fuse box.
2. With Allen wrench supplied with dryer, turn clockwise two Allen screws from bottom side of dryer case.
3. Remove dryer cover.

Parts List

Repair Parts List For Airforce Hand Dryers



All kits include fasteners needed for installation.

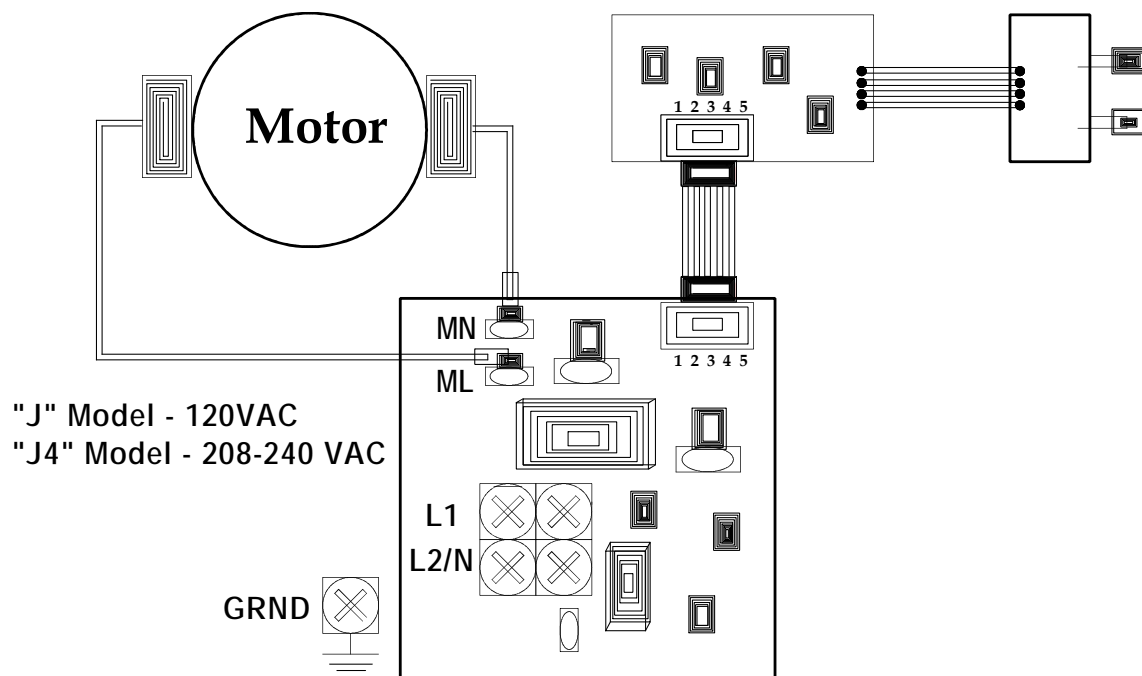
For Repair Parts, visit www.WorldDryer.com
Please provide following information:

- Model number
- Serial number
- Part description and number shown in parts list

| # | Description | Part Number | Qty |
|----|--|--------------|-----|
| 1a | Motor, 120 V, Model J | 32-J120K | 1 |
| 1b | Motor, 240 V, Model J4 | 32-J240K | 1 |
| 2 | Kit, Main Controls (All voltage models) | 16-200K | 1 |
| 3 | Kit, IR Sensor (All voltage models) | 49-200K | 1 |
| 4 | Kit, Plenum Cap | 47-120309K | 1 |
| 5 | Filter, Air Intake | 93-120309 | 1 |
| 6 | Kit, Grounding | 52-030244K | 1 |
| 7 | Tamper-resistant Cover Screws and Wrench | 46-040221K | 2 |
| 8 | Wrench | 56-40189 | 1 |
| 9a | Cover, Alum, White | 20-243-974JK | 1 |
| 9b | Cover, Alum, Chrome, Polished | 20-243-970JK | 1 |
| 9c | Cover, Alum, Chrome, Brushed | 20-243-971JK | 1 |
| 9d | Cover, Alum, Black | 20-243-162JK | 1 |
| 9e | Cover, Steel, White | 20-243-975JK | 1 |
| 9f | Cover, Stainless Steel, Polished | 20-243-972JK | 1 |
| 9g | Cover, Stainless Steel, Brushed | 20-243-973JK | 1 |

All kits include fasteners needed for installation.

Wiring Diagram



Installation

1. Disconnect the power source.
2. Use the security hex key supplied to turn the cover mounting screws clockwise to remove the cover from the dryer.
3. Place the hand dryer base on the wall at the desired location using Table 2 to determine the recommended mounting height. With the base so located, use it as a template to mark locations of the 4 mounting bolt holes on the wall. Ensure that no reflective object (such as a hand basin) is located directly under infra-red sensor eye; the minimum distance is 18 inches (46 cm).
4. Fasten the base to the wall, using the type of bolts suggested in Table 3.
5. All automatic dryers must have their own dedicated 10 amp circuit.
6. Connect the dryer to the nearest suitable distribution panel.
7. Replace cover, turn screws counter-clockwise making certain not to over-tighten.

IMPORTANT: Consult local and general regulations before performing dryer installation. Ensure that the electrical network is not overloaded. Do not connect to a branch circuit over 10 amps.

Table 2

| Recommended Mounting Heights from Floor to Dryer Bottom Edge | in. (cm.) |
|--|-----------|
| Men's washrooms | 46 (117) |
| Women's washrooms | 44 (112) |
| Children's washrooms, ages 4-7 | 32 (81) |
| Children's washrooms, ages 7-10 | 36 (91) |
| Children's washrooms, ages 10-13 | 40 (102) |
| Children's washrooms, ages 13-17 | 44 (112) |
| Handicap Mounting Height | 37 (94) |

Table 3

| Type of Wall | Type of Bolt | Minimum Bolt Length |
|--|--|-----------------------------|
| Hollow Tile, Lath, Wall Board or Metal | 1/4" (M6) screw Type or Wing Type toggle Bolts | Dependent on wall thickness |
| Cement, Brick, or Tile Covered Cement or Brick | 1/4" (M6) Stud Type Expansion Bolts | 3" (76mm) |
| Stud Wall with wood Backing | No 16 (M8) Wood Screws | 23/4" (70mm) |

Maintenance and Cleaning Instructions

Maintenance

1. Remove fuse or shut off power to the dryer at fuse box.
2. With Allen wrench supplied with dryer, turn clockwise two Allen screws from bottom side of dryer case.
3. Remove dryer cover.

Cleaning Instructions

Read complete instruction before proceeding. Under normal use, cleaning the Dryer once a year will keep it in good operating condition. If the washroom traffic is heavier than normal, the cleaning should be done every 6 months. Lint and dust build up inside the dryer can result in damage to motor.

1. Turn off dryer at circuit breaker or fuse panel.
2. Turn clockwise two cover mounting screws from dryer cover using security hex key provided. Support cover while removing screws.
3. Vacuum out dirt from blower and housing. Use caution not to damage wires or circuit boards.
4. The motor inlet cover may be removed by unscrewing the (4) screws. This allows access to the motor for cleaning or replacement.
5. Use soft-medium bristle 1/2" paint brush to clean dust and dirt from motor.
6. Replace cover. Place cover squarely over base and push flush to wall. Turn cover mounting screws counter-clockwise and tighten until snug. Do not over tighten.

Troubleshooting Chart

| | | |
|---|---|---|
| Dryer fails to start. | Sensor obstruction | 1. Check Sensor Lens for foreign material or dirt. Clean lens with soft damp cloth and mild cleaning agent 2. If Lens is damaged or scratched, replace it |
| | No power to the unit | Check if power is "ON"; Check electrical connections |
| | Faulty Circuit Board and Sensor | Listen for PCB Relay "Click"; If no "Click" is heard, replace the PCB and Sensor |
| | Faulty Motor | If Relay "Click" is heard, but unit does not start, replace the Motor / Fan assembly |
| Dryer will not shut off or runs 20-30 seconds, then will not re-start | Sensor obstruction | 1. Check Sensor Lens for foreign material or dirt. Clean Lens with soft damp cloth and mild cleaning agent 2. If Lens is damaged or scratched, replace it |
| | Sensor receiving false signal or reflection | 1. Hand Dryer should be mounted a minimum of 18" above a reflective surface |
| | | 2. Check if other Infrared operated appliances in the vicinity may be triggering the Dryer |
| | | 3. Replace the PCB and Sensor |
| Dryer "Ghosts" starts with no hands present | Fluctuating power supply | 1. Multiple Hand Dryers on one circuit or Dryers sharing a lighting circuit. Automatic Hand Dryers must be on dedicated circuits 2. Building wiring may be insufficient gauge or too long of a run from the supply |
| | | |
| Motor noisy or vibrates | Dryer mount on wall loose | Check if mounting screws are tight and dryer is solid to wall |
| | Faulty Motor and Fan | Replace Motor and Fan Assembly |
| Dryer air too hot | Air intake blocked | Inspect for and remove foreign material blocking air intake slots. Using a soft brush and vacuum, clean intake slots |
| | Dirty air filter | Clean or replace air filter. To clean, remove and use a soft brush and vacuum to remove all foreign material. If air filter cannot be completely cleaned, replace it |

Limited Warranty

World LIMITED FIVE- YEAR WARRANTY. World dryer™ warm air hand dryers, covered in this manual, are warranted by world dryer corporation to the original owner against defects in workmanship or materials under normal use for five years and three years for electronic controls after the date of purchase. Normal wear or abuse of any component is excluded from this warranty. Any part which is determined to be defective in material or workmanship and returned, shipping costs prepaid, will be, as the exclusive remedy, repaired or replaced at world's option. For limited warranty claim procedures, see "prompt disposition" below. This limited warranty gives purchasers specific legal rights which vary from jurisdiction to jurisdiction.

LIMITATION OF LIABILITY. To the extent allowable under applicable law, World's liability for consequential and incidental damages is expressly disclaimed. World's liability in all events is limited to and shall not exceed the purchase price paid.

WARRANTY DISCLAIMER. World has made a diligent effort to provide product information and illustrate the products in this literature accurately; however, such information and illustrations are for the sole purpose of identification, and do not express or imply a warranty that the products are MERCHANTABLE, or FIT FOR A PARTICULAR PURPOSE, or that the products will necessary conform to the illustrations or descriptions. Except as provided below, no warranty or affirmation on fact, expressed or implied, other than as stated in the "LIMITED WARRANTY" above is made or authorized by World.

PRODUCT SUITABILITY. Many jurisdictions have codes and regulations governing sales, construction, installation, and/or use of products for certain purposes, which may vary from those in neighboring areas. While World attempts to assure that the products comply with such codes, it cannot guarantee compliance, and cannot be responsible for how the product is installed or used. Before purchase and use of a product, review the product application, and all applicable national and local codes and regulations, and be sure that the product, installation, and use will comply with them.

Certain aspects of disclaimers are not applicable to consumer products; e.g., (a) some jurisdictions do not allow the exclusion or limitation of incidental or consequential damages, so the above limitation or exclusion may not apply to you; (b) also, some jurisdictions do not allow a limitation on how long an implied warranty lasts, consequentially the above limitation may not apply to you; and (c) by law, during the period of this Limited Warranty, and implied warranties of implied merchantability or fitness for particular purpose applicable to consumer products purchased by consumers, may not be excluded or otherwise disclaimed.

Manufactured by World Dryer Corporation, Berkeley, Illinois 60163 U.S.A.

PROMPT DISPOSITION. World will make a good faith effort for prompt correction or other adjustment with respect to any product which proves to be defective within limited warranty. For any product believed to be defective within limited warranty, first write or call dealer from whom the product was purchased. Dealer will give additional directions. If unable to resolve satisfactorily, write to World at address below, giving dealer's name, address, date, and number of dealer's invoice, and describing the nature of defect. Title and risk of loss pass to buyer on delivery to common carrier. If product was damaged in transit to you, file claim with carrier.



WORLD DRYER

5700 McDermott Drive
Berkeley, IL 60163 U.S.A.
800-323-0701
www.worlddryer.com